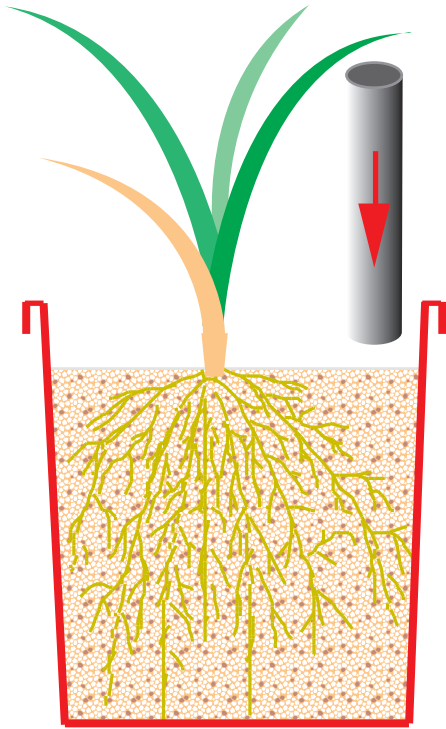
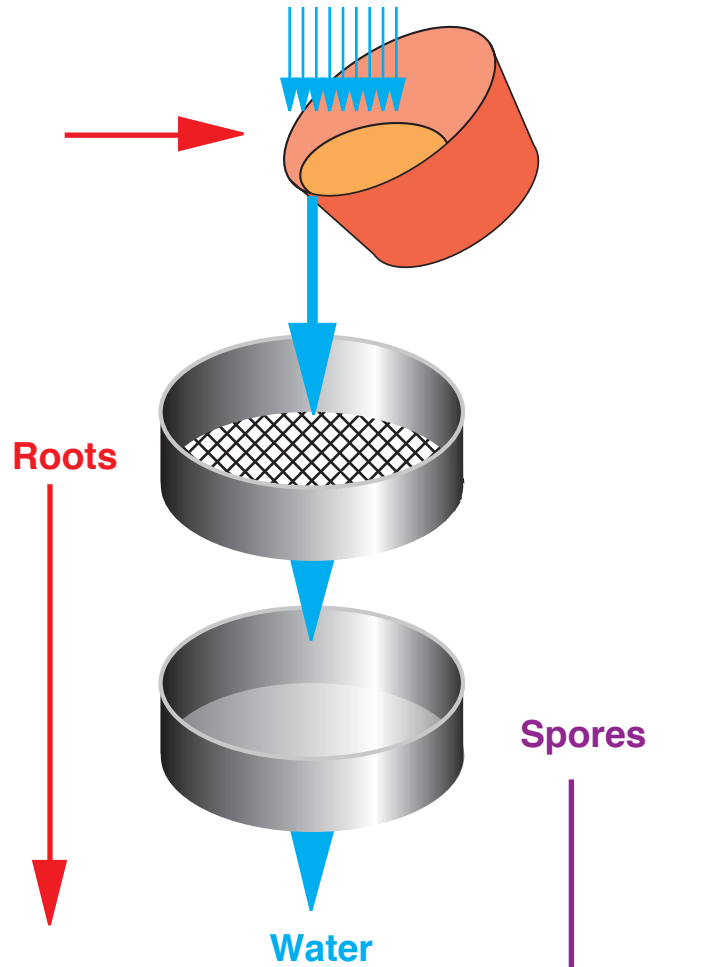


Figure 3.15. SAMPLING VAM FUNGUS POT CULTURES

1. Sample pot culture with soil corer



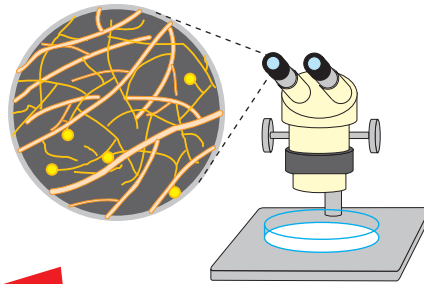
2. Wash roots and spores from soil



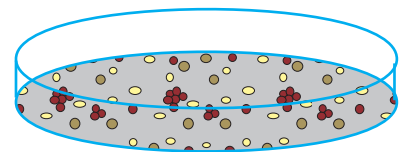
5. Clear and stain roots



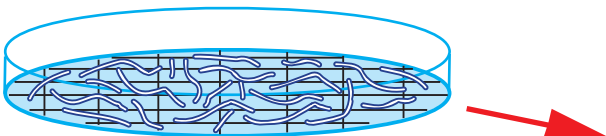
4. Examine roots for external hyphae and immature spores



3. Quantify and identify VAM spores



6. Use visual estimation or gridline intersect method to quantify VAM



7. Make slides from roots and identify fungi using morphology

